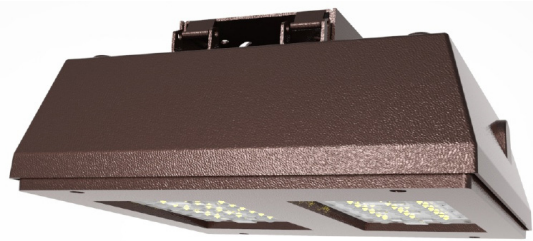


# LED SQUARE GARAGE MHTL-SGL SERIES

Project \_\_\_\_\_

Part Number \_\_\_\_\_

Quantity \_\_\_\_\_



## FEATURES

- >100,000 Hours Rated Lifespan
- 10-year Warranty
- L70 > 100,000 Hours (100W)
- Die Cast Aluminum Housing (Bronze)
- High Performance Acrylic Optical Lens
- Surface Mounting Bracket for Easy Installation
- Available Integrated Occupancy Sensor
- TAA/BAA Compliant

## LED/DRIVER

- Universal Input Voltage 120 - 277V
- Optional Input Voltage 347V/480V
- Power Factor > 0.90 @277V
- THD < 20% @277V

- Color Temperature 4000K/5000K
- 0-10V Dimming Driver
- CRI > 75
- 6kV Surge Protection - Optional 20kV

## APPLICATIONS

- Canopy
- Parking Garage
- Manufacturing/Warehouse
- Walkway



Model	Input Power	Lm/W	Lumen	Dimensions
MHTL-SGL-38E-4K-U	38W	>114	>4,000	12.4" x 12.4" x 5"
MHTL-SGL-48E-4K-U	48W	>120	>5,500	12.4" x 12.4" x 5"
MHTL-SGL-50E-4K-U	50W	>105	>4,900	12.4" x 12.4" x 5"
MHTL-SGL-72E-4K-U	72W	>115	>7,900	12.4" x 12.4" x 5"
MHTL-SGL-100E-4K-U	100W	>106	>10,000	12.4" x 12.4" x 6.5"



Manufactured in the USA

Toll Free **888-511-7780** • [www.mhtlighting.com](http://www.mhtlighting.com)



# LED SQUARE GARAGE MHTL-SGL SERIES

Project \_\_\_\_\_

Part Number \_\_\_\_\_

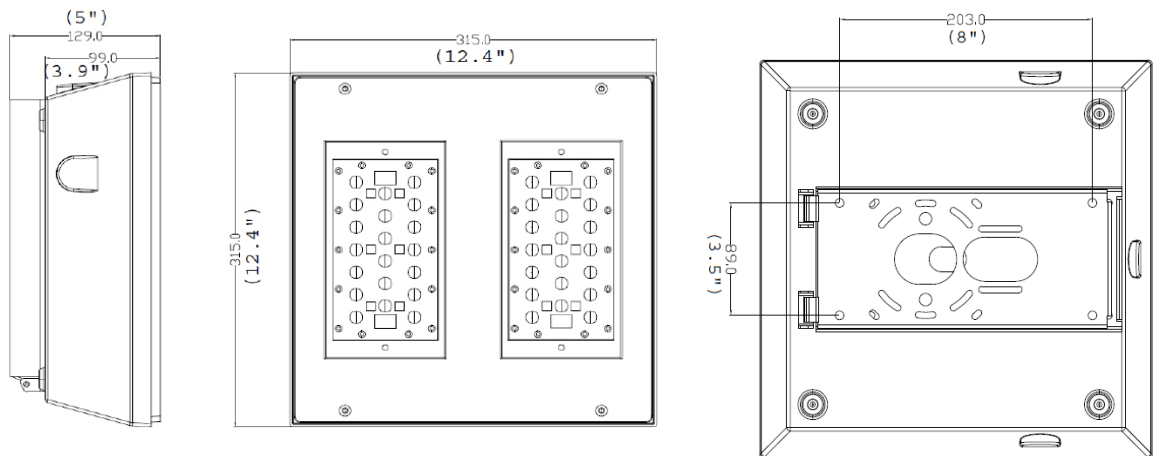
Quantity \_\_\_\_\_

## ORDERING CODES

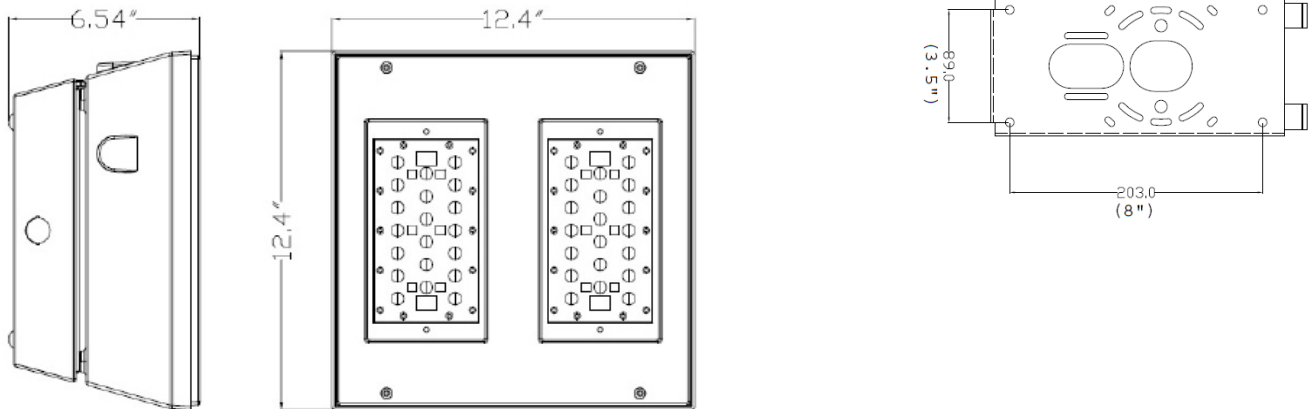
MHTL-SGL	E				
Wattage:	Color Temp:	Input Voltage:	Mounting:	Option:	
38, 48,	4K=4000K	U=120-277V	PM=Pendant Mount	(Standard in Bronze)	
50, 72,	5K=5000K	347=347V	(Standard 3/4")	SPD=20kV Surge Protective Device	
100		480=480V	HM=Hook Mount	OS-On/Off=On/Off Motion Sensor	
				OS-Dim=Dimming Motion Sensor	

## DIMENSIONS

38/48/50/72W



100W



- MHT Products are ETL Listed and Assembled in ISO9000/1 Certified US Facility
- MHT Lighting Offers a 10-year Warranty (See Warranty Terms and Conditions)
- Every Product is Quality Tested and Inspected Prior to Shipment
- Proudly Manufactured in the USA
- For Product IES Files Please Contact Your Local Reps

### MHT Plant Operations

1961 Richmond Terrace  
Staten Island, New York 10302  
Tel: (718) 524-4370  
Fax: (718) 524-4390

### West Coast Operations

2285 Michael Faraday Dr. Suite 10  
San Diego, California 92154  
Tel: (619) 661-0600

[www.mhtlighting.com](http://www.mhtlighting.com)

**888-511-7780**

MHT Confidential  
Rev Date: May 2018