

LED SHOEBOX

MHTL-SB HIGH OUTPUT SERIES

Project _____
 Part Number _____
 Quantity _____



APPLICATIONS

- All Area/Flood Applications
- Parking Lot
- Park

FEATURES

- >100,000 Hours Rated Lifespan
- 10-year Warranty
- L90 > 100,000 Hours
- Die Cast Aluminum Housing (Dark Bronze)
- Open Top Design for Better Ventilation and Air Flow
- High Performance Acrylic Optical Lens
- Fixture Protection Class IP65
- Multiple Mounting and Distribution Options
- Down Lighting Applications
- TAA/BAA Compliant



LED/DRIVER

- Universal Input Voltage 120~277V
- Optional Input Voltage 347V/480V
- Power Factor > 0.95 @277V
- THD < 15 % @277V
- 6KV Surge Protection - Optional 20kV
- Color Temperature 4000K/5000K
- 0-10V Dimming Driver
- CRI > 75

Model	Input Power	Lumen	Dimensions	EPA at 0° (ft²)
MHTL-SB-520E-5K-U	520W	58,000	24.9" x 24" x 4.6"	4.1



Manufactured in the USA

Toll Free **888-511-7780** • www.mhtlighting.com



LED SHOEBOX

MHTL-SB HIGH OUTPUT SERIES

Project _____
 Part Number _____
 Quantity _____

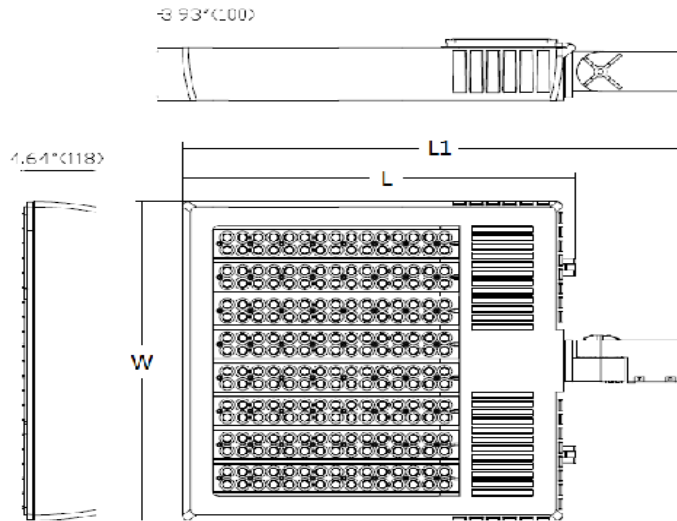
ORDERING CODES

MHTL-SB-520E

Color Temp:	Input Voltage:	Distribution:	Mounting:	Option:
4K=4000K	U=120-277V	T3=Type III	EA6=6" Arm	PR3=3-pin Photocell Receptacle
5K=5000K	347=347V	T5=Type V	EA10=10" Arm	PC3=3-pin Photocell
	480=480V	33=3 X 3	SF=Slip Fitter	SC=Shorting Cap
		55=5 X 5	SW=Swivel Mount	TC=Top Cover
		66=6 X 6		SPD=20kV Surge Protective Device
				OS-On/Off=On/Off Motion Sensor
				OS-Dim=Dimming Motion Sensor

4000K is DLC Listed Product

DIMENSIONS



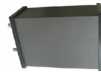
MOUNTING OPTIONS



SF - Slip Fitter (O.D. 2-3/8" Round Pole)
 (Adjustable. 1ft Leads are Included)



SW - Swivel/Surface Mount Bracket
 (Adjustable. 1ft Power Cord is Included)



EA - 6" or 10" Aluminum Extruded Arm
 (For Square Pole Use. 1ft Power Cord is Included)

inch (mm)			
Input Power	L	L1 (w/ SF)	W
520W	24.90 (633)	31.53 (801)	24.00 (609)

- MHT Products are ETL Listed and Assembled in ISO9000/1 Certified US Facility
- MHT Lighting Offers a 10-year Warranty (See Warranty Terms and Conditions)
- Every Product is Quality Tested and Inspected Prior to Shipment
- Proudly Manufactured in the USA
- For Product IES Files Please Contact Your Local Reps

MHT Plant Operations
 1961 Richmond Terrace
 Staten Island, New York 10302
 Tel: (718) 524-4370
 Fax: (718) 524-4390

West Coast Operations
 2285 Michael Faraday Dr. Suite 10
 San Diego, California 92154
 Tel: (619) 661-0600

www.mhtlighting.com
888-511-7780

MHT Confidential
 Rev Date: May 2020