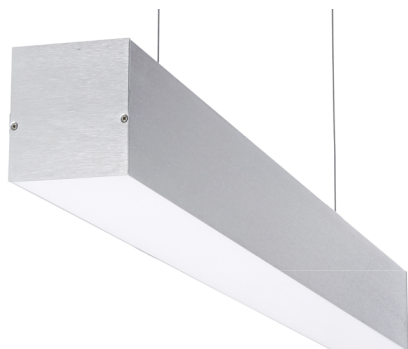


LED LINEAR SUSPENDED MHTL-CUBE-4FT SERIES

Project _____
Part Number _____
Quantity _____



APPLICATIONS

- Data Center
- Display Room
- Hospitals
- Office
- School



FEATURES

- >150,000 Hours Rated Lifespan
- L70 > 100,000 Hours
- 6063 Extruded Aluminum Housing - White Finish
- Advanced Optical Film to Optimize Efficiency
- Frosted White PC Diffuser to Reduce Glare
- Full Even Illumination Across the Diffuser
- No Light Leaks at All Visible Joints
- Standard 3ft. Aircraft Cable For Suspended Mount
- Optional Ceiling or Wall Surface Mount
- Available Emergency Battery Backup



LED/DRIVER

- Universal Input Voltage 120 - 277V
- Operating Frequency 50Hz/60Hz
- Power Factor > 0.95 @277V
- THD < 10% @277V
- CRI > 83 or Optional 90 CRI
- 0-10V Dimming Driver
- Color Temperature 3500K/4000K/5000K
- 4kV Surge Protection

Model	Input Power	CCT	Lumen	Dimensions
MHTL-CUBE-4FT-35E-35K-U	35W	3500K	4,000	47.31" x 3" x 3.5"



Manufactured in the USA

Toll Free **888-511-7780** • www.mhtlighting.com



LED LINEAR SUSPENDED MHTL-CUBE-4FT SERIES

Project _____
Part Number _____
Quantity _____

ORDERING CODES

MHTL-CUBE-4FT-35E

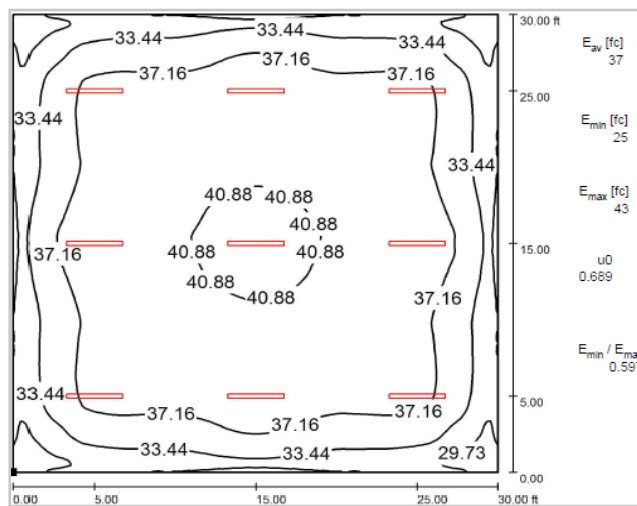
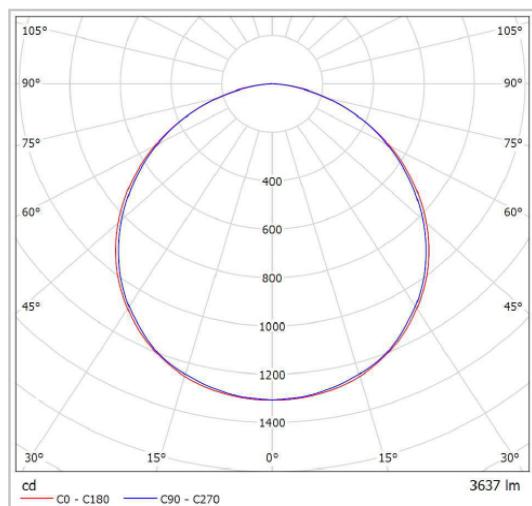
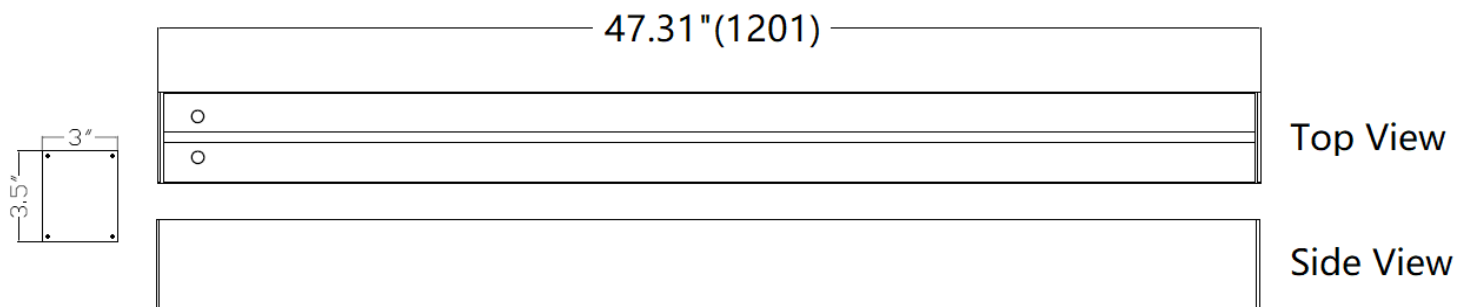
Color Temp:
35K=3500K
4K=4000K
5K=5000K

Input Voltage:
U=120-277V

Mounting:
WM=Wall Surface Mount
(Specify Hole Location for Wires)
SM=Ceiling Surface Mount
AC=Aircraft Cable
(Standard 3ft. Long)

Option:
(Custom Color Available.
Standard in White Finish)
EB=Emergency Backup
90CRI=90 CRI
CK=White Canopy Kit
(Set of Two)

DIMENSIONS



- MHT Products are ETL Listed and Assembled in ISO9000/1 Certified US Facility
- MHT Lighting Offers a 10-year Warranty (See Warranty Terms and Conditions)
- Every Product is Quality Tested and Inspected Prior to Shipment
- Proudly Manufactured in the USA
- For Product IES Files Please Contact Your Local Reps

MHT Plant Operations
1961 Richmond Terrace
Staten Island, New York 10302
Tel: (718) 524-4370
Fax: (718) 524-4390

West Coast Operations
2285 Michael Faraday Dr. Suite 10
San Diego, California 92154
Tel: (619) 661-0600

www.mhtlighting.com
888-511-7780

MHT Confidential
Rev Date: March 2019