



FEATURES

- An inspeXtor Platform Compatible Fixture Powered by Cisco using PoE (Power over Ethernet) Cabling
- The inspeXtor Platform is a PoE Lighting Management System providing Building Automation and Data Collection
- PoE Systems are Safe and Efficient Low Voltage Platforms
- LED Wall Mounted Vanity LED Fixture
- Ideal for Bathrooms and Interior Locations

PROJECT:

TYPE:

NOTES:

ORDERING CODE

MHTi-VNT-SC

Model

Size & Wattage

CCT

Options

EXAMPLE

MHTi-VNT-SC

24-20E

27K

EM

Series:

MHTi-VNT-SC

Color Temperatures:

27K - 2700K

3K - 3000K

35K - 3500K

4K - 4000K

Size & Wattage:

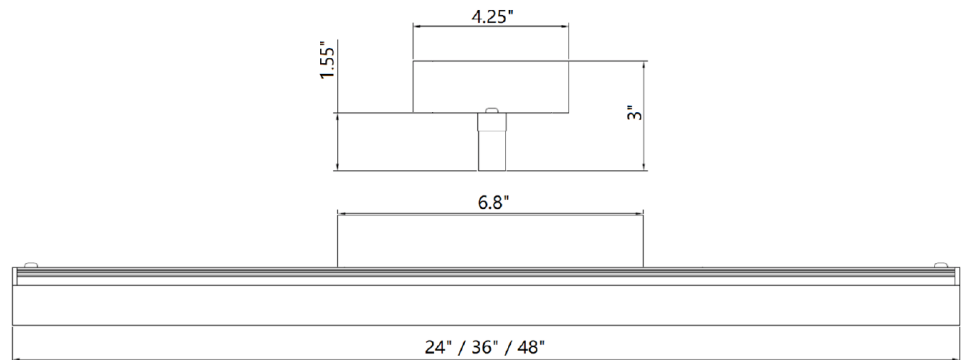
24-20E - 24" 20W

Options:

Standard in Chrome

EM - Emergency Battery Backup

DIMENSIONS:



Manufactured in the USA

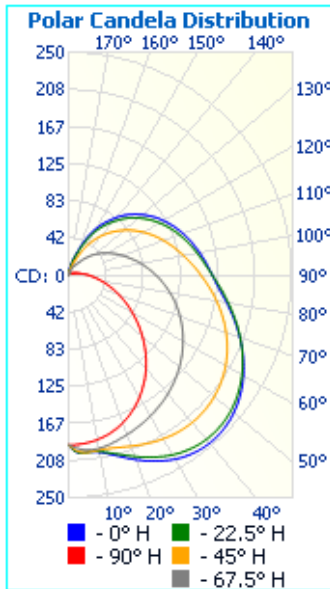
Toll Free **888-511-7780** • www.inspeXtor.com



PHOTOMETRICS:

MHTi-VNT-SC-24-20E

Luminaire Output: 1,826 lumens, 20 Watts



| | Center Beam fc | Beam Width |
|-------|----------------|------------|
| 1.5ft | 84.4 fc | 5.2 ft |
| 3.0ft | 21.1 fc | 10.4 ft |
| 4.5ft | 9.38 fc | 15.6 ft |
| 6.0ft | 5.27 fc | 20.7 ft |
| 7.5ft | 3.38 fc | 25.9 ft |
| 9.0ft | 2.34 fc | 31.1 ft |

■ Horiz. Spread: 119.9°

FIXTURE PERFORMANCE:

| MODEL | MAX WATTAGE | LUMEN |
|-----------------------|-------------|-------|
| MHTi-VNT-SC-24-20E-3K | 20W | 1,800 |

SPECIFICATIONS

Housing: Extruded Aluminum Construction Mounted on a Chrome Finished Steel Back Box with a Universal Junction Box Mounting Plate

Lens: Clear and White Acrylic

Electrical: Integrated PoE Low Voltage Driver Node. Non-integrated Motion Sensor and Emergency Battery Backup.

Warranty: 5-Year Warranty

Initial Delivered Lumens: 1,800 Lumens

Max Input Power: 20W

CCT: 2700K/3000K/3500K/4000K

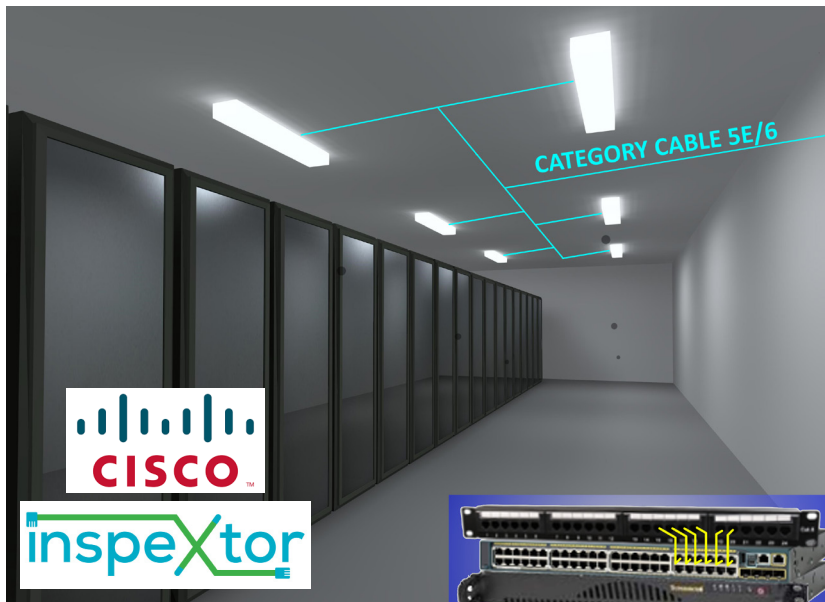
CRI: 85

L70 Lifetime: >50,000 Hours

Rated Lifespan: >50,000 Hours

Dimensions:

Chrome Box: 6.8" x 4.25" x 1.45"
Overall: 24" x 4.25" x 3"



- All Products are ETL Listed and Assembled in ISO9000/1 Certified US Facility
- Fixtures carry a limited 5-year Warranty (See Warranty Terms and Conditions)
- Every Product is Quality Tested and Inspected Prior to Shipment
- Proudly Manufactured in the USA

inspextor Plant Operations

1961 Richmond Terrace
Staten Island, New York 10302
Tel: (718) 524-4370
Fax: (718) 524-4390

West Coast Operations

2285 Michael Faraday Drive
Suite 10
San Diego, California 92154
Tel: (619) 661-0600

www.inspextor.com

888-511-7780

Rev Date: June 2019