



FEATURES

- An inspeXtor Platform Compatible Fixture Powered by Cisco using PoE (Power over Ethernet) Cabling
- The inspeXtor Platform is a PoE Lighting Management System providing Building Automation and Data Collection
- PoE Systems are Safe and Efficient Low Voltage Platforms
- LED Surface Mounted Under Cabinet LED Fixture With Non-Integrated Node Driver

PROJECT:

TYPE:

NOTES:

ORDERING CODE

MHTi-UC-SC

Model

Size & Wattage

CCT

Options

EXAMPLE

MHTi-UC-SC

22-10E

3K

EM

Series:

MHTi-UC-SC

Color Temperatures:

3K - 3000K
 35K - 3500K
 4K - 4000K
 5K - 5000K

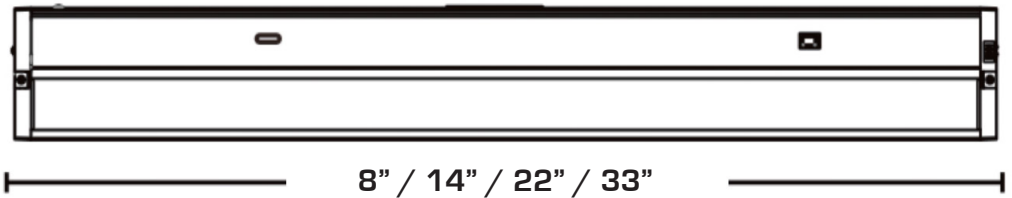
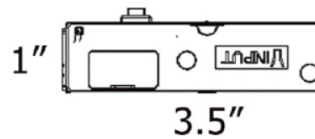
Size & Wattage:

8-4E - 8" 4W
 14-8E - 14" 8W
 22-10E - 22" 10W
 33-15E - 33" 15W

Options:

Standard in White
 EM - Emergency Battery Backup

DIMENSIONS:



Manufactured in the USA

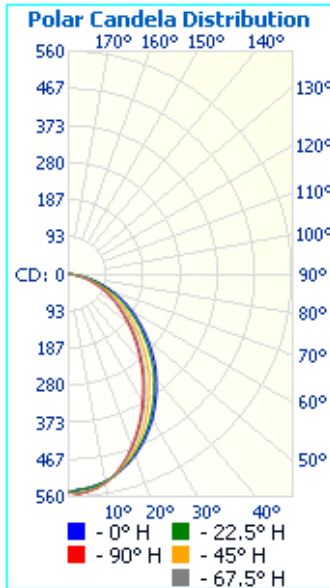
Toll Free **888-511-7780** • www.inspeXtor.com



PHOTOMETRICS:

MHTi-UC-SC-33-15E

Luminaire Output: 1,321 lumens, 15 Watts



	Center Beam fc	Beam Width	
1.5ft	243 fc	3.3 ft	2.5 ft
3.0ft	60.7 fc	6.6 ft	5.1 ft
4.5ft	27.0 fc	9.9 ft	7.6 ft
6.0ft	15.2 fc	13.2 ft	10.2 ft
7.5ft	9.71 fc	16.5 ft	12.7 ft
9.0ft	6.74 fc	19.8 ft	15.2 ft

■ Vert. Spread: 95.5°
■ Horiz. Spread: 80.5°

FIXTURE PERFORMANCE:

MODEL	MAX WATTAGE	LUMEN
MHTi-UC-SC-8-4E-3K	4W	350
MHTi-UC-SC-14-8E-3K	8W	750
MHTi-UC-SC-22-10E-3K	10W	900
MHTi-UC-SC-33-15E-3K	15W	1,350

SPECIFICATIONS

Housing: Die-formed Steel Construction. Designed For Under Cabinet Installations.

Lens: White Polycarbonate

Electrical: Non-Integrated PoE Low Voltage Driver Node, Sensor and Emergency Battery Backup.

Warranty: 5-Year Warranty

Initial Delivered Lumens:
350 - 1,350 Lumens

Max Input Power: 4W to 15W

CCT: 3000K/3500K/
4000K/5000K

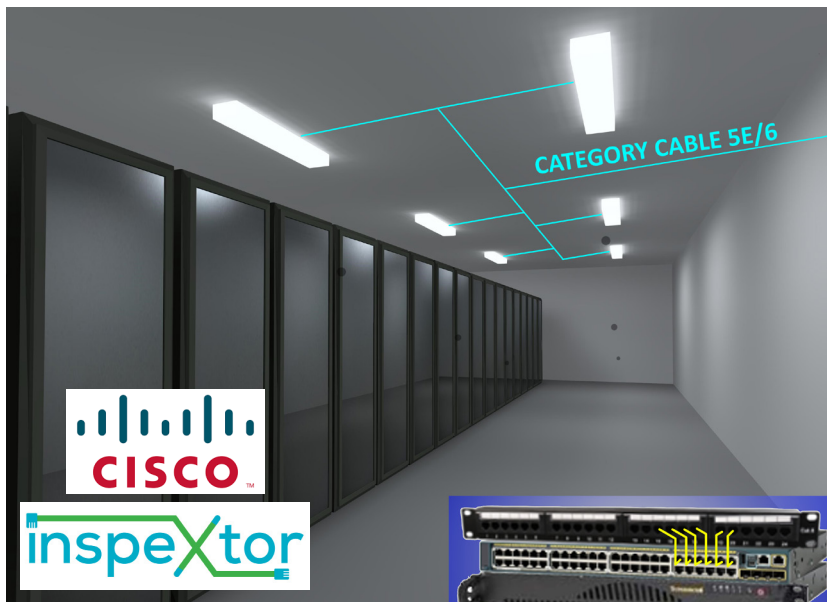
CRI: 90

L70 Lifetime: >50,000 Hours

Rated Lifespan: >50,000 Hours

Dimensions:

8-4E - 8" x 3.5" x 1"
 14-8E - 14" x 3.5" x 1"
 22-10E - 22" x 3.5" x 1"
 33-15E - 33" x 3.5" x 1"



- All Products are ETL Listed and Assembled in ISO9000/1 Certified US Facility
- Fixtures carry a limited 5-year Warranty (See Warranty Terms and Conditions)
- Every Product is Quality Tested and Inspected Prior to Shipment
- Proudly Manufactured in the USA

inspextor Plant Operations

1961 Richmond Terrace
 Staten Island, New York 10302
 Tel: (718) 524-4370
 Fax: (718) 524-4390

West Coast Operations

2285 Michael Faraday Drive
 Suite 10
 San Diego, California 92154
 Tel: (619) 661-0600

www.inspextor.com

888-511-7780

Rev Date: June 2019