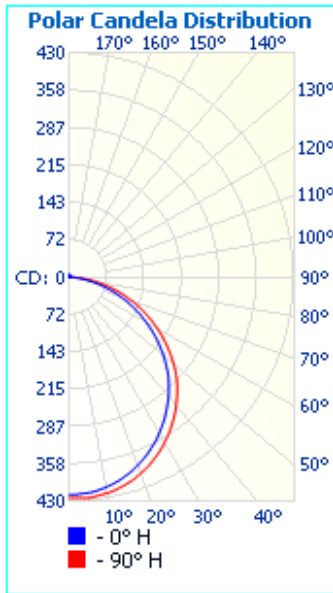


PHOTOMETRICS:

MHTi-SMD-SC-S-4-10E

Luminaire Output: 1,056 lumens, 10 Watts

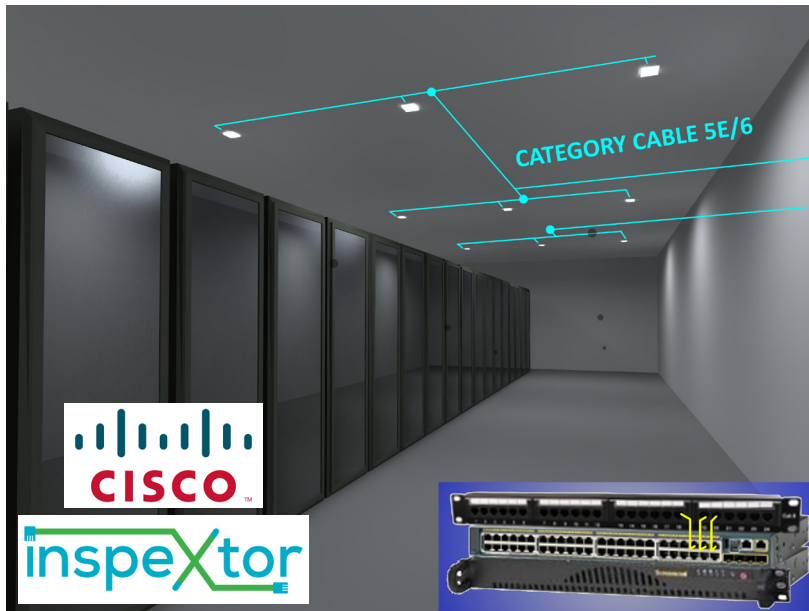


| | Center Beam fc | Beam Width | |
|-------|----------------|----------------|----------------|
| 1.5ft | 185 fc | 4.0 ft | 4.1 ft |
| 3.0ft | 46.2 fc | 8.0 ft | 8.2 ft |
| 4.5ft | 20.5 fc | 12.0 ft | 12.3 ft |
| 6.0ft | 11.5 fc | 16.0 ft | 16.4 ft |
| 7.5ft | 7.39 fc | 20.0 ft | 20.5 ft |
| 9.0ft | 5.13 fc | 24.0 ft | 24.5 ft |

■ Vert. Spread: 106.2°
■ Horiz. Spread: 107.5°

FIXTURE PERFORMANCE:

| MODEL | MAX WATTAGE | LUMEN |
|------------------------|-------------|-------|
| MHTi-SMD-SC-S-4-10E-3K | 10W | 1,000 |
| MHTi-SMD-SC-S-6-14E-3K | 14W | 1,400 |



- All Products are ETL Listed and Assembled in ISO9000/1 Certified US Facility
- Fixtures carry a limited 5-year Warranty (See Warranty Terms and Conditions)
- Every Product is Quality Tested and Inspected Prior to Shipment
- Proudly Manufactured in the USA

SPECIFICATIONS

Housing: Die-cast Alumium Trim

Lens: White Frosted Polycarbonate

Electrical: Non-Integrated PoE Low Voltage Driver Node, Sensor and Emergency Battery Backup.

Warranty: 5-Year Warranty

Initial Delivered Lumens:

1,000-1,400 Lumens

Max Input Power: 10W/14W

CCT: 3000K/3500K/
4000K/5000K

CRI: 90

L70 Lifetime: >50,000 Hours

Rated Lifespan: >60,000 Hours

Dimensions:

4-inch - 5.11" x 5.11" x 0.51

6-inch - 7.28" x 7.28" x 0.51

inspeXtor Plant Operations

1961 Richmond Terrace
Staten Island, New York 10302
Tel: (718) 524-4370
Fax: (718) 524-4390

West Coast Operations

2285 Michael Faraday Drive
Suite 10
San Diego, California 92154
Tel: (619) 661-0600

www.inspeXtor.com

888-511-7780

Rev Date: June 2019