



FEATURES

- An inspeXtor Platform Compatible Fixture Powered by Cisco using PoE (Power over Ethernet) Cabling
- The inspeXtor Platform is a PoE Lighting Management System providing Building Automation and Data Collection
- PoE Systems are Safe and Efficient Low Voltage Platforms

SPECIFICATIONS

Housing: Die-cast Aluminum White Housing with Steel Spring Clips

Lens: Polycarbonate Optical

Electrical: Non-Integrated PoE Low Voltage Driver Node, Sensor and Emergency Battery Backup

Warranty: 5-Year Warranty

Initial Delivered Lumens: 900 Lumens

Max Input Power: 9W

CCT: 2700K/3000K/3500K/4000K/5000K

CRI: 80

L70 Lifetime: >50,000 Hours

Rated Lifespan: >50,000 Hours

Dimensions:

5" x 5" x 3"



PROJECT:

TYPE:

NOTES:

ORDERING CODE

MHTi-PAR20-SC — [] — [] — [] — []
 Model Wattage CCT Distribution Options

EXAMPLE

MHTi-PAR20-SC — 9E — 35K — 35 — EM

Series:

MHTi-PAR20-SC

Size & Wattage:

9E - 9W

Color Temperatures:

27K - 2700K
 3K - 3000K
 35K - 3500K
 4K - 4000K
 5K - 5000K

Distributions:

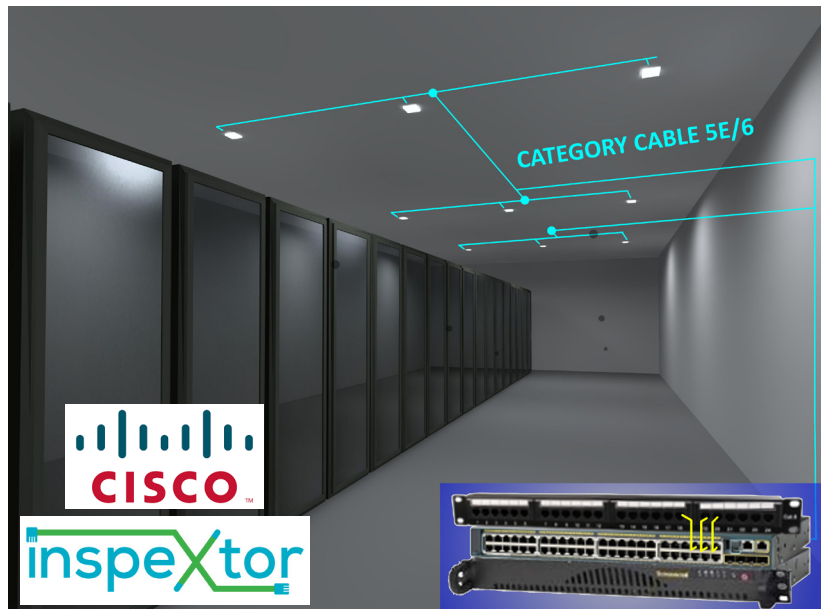
35 - 35°
 50 - 50°
 65 - 65°

Options:

Standard Square Trim in White
 Other Trim and Colors are Available
 EM - Emergency Battery Backup

FIXTURE PERFORMANCE:

MODEL	MAX WATTAGE	LUMEN
MHTi-PAR20-SC-9E-3K-35	9W	900



- All Products are ETL Listed and Assembled in ISO9000/1 Certified US Facility
- Fixtures carry a limited 5-year Warranty (See Warranty Terms and Conditions)
- Every Product is Quality Tested and Inspected Prior to Shipment
- Proudly Manufactured in the USA

inspeXtor Plant Operations

1961 Richmond Terrace
 Staten Island, New York 10302
 Tel: (718) 524-4370
 Fax: (718) 524-4390

West Coast Operations

2285 Michael Faraday Drive
 Suite 10
 San Diego, California 92154
 Tel: (619) 661-0600



Manufactured in the USA

www.inspeXtor.com

888-511-7780

Rev Date: June 2019