



## FEATURES

- An inspeXtor Platform Compatible Fixture Powered by Cisco using PoE (Power over Ethernet) Cabling
- The inspeXtor Platform is a PoE Lighting Management System providing Building Automation and Data Collection
- PoE Systems are Safe and Efficient Low Voltage Platforms
- LED Tube Fixture with a Magnetic Aluminum Extrusion Complete With Non-Integrated Sensor and PoE Driver Node
- Ideal for Coporate Campus and Data Center Facilities, as Cove Lighting, and Retrofitting into Flourescent Troffers

PROJECT:

TYPE:

NOTES:

### ORDERING CODE

MHTi-MAGNT8-SC	—		—		—		—	
Model		Size & Wattage		CCT		Lens Type		Options

### EXAMPLE

MHTi-MAGNT8-SC	—	4-28	—	35K	—	FL	—	EM
----------------	---	------	---	-----	---	----	---	----

Series:

MHTi-MAGNT8-SC

Lens Type:

CL - Clear Lens  
FL - Frosted Lens

Size & Wattage:

2-28E - 18.9" 28W  
4-48E - 42.5" 48W

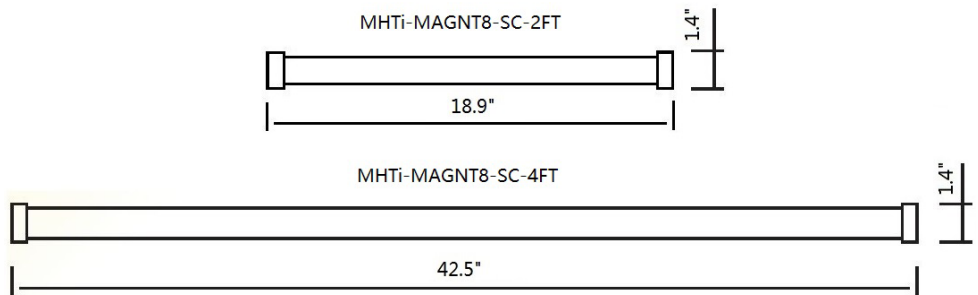
Options:

EM - Emergency Battery Backup

Color Temperatures:

3K - 3000K  
35K - 3500K  
4K - 4000K  
5K - 5000K

DIMENSIONS:



Manufactured in the USA

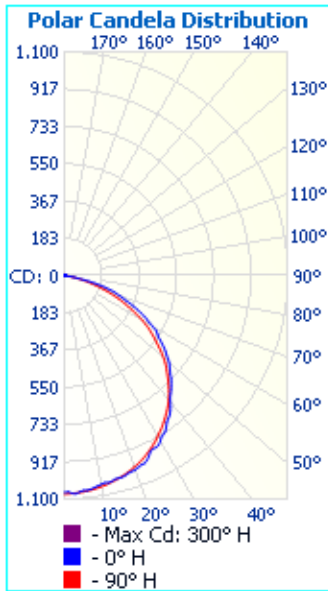
Toll Free 888-511-7780 • www.inspeXtor.com



## PHOTOMETRICS:

### MHTi-MAGNT8-SC-4-28E (Pair)

Luminaire Output: 3,233 lumens, 28 Watts



	Center Beam fc	Beam Width	
1.5ft	475 fc	4.8 ft	4.6 ft
3.0ft	119 fc	9.5 ft	9.1 ft
4.5ft	52.8 fc	14.3 ft	13.7 ft
6.0ft	29.7 fc	19.1 ft	18.2 ft
7.5ft	19.0 fc	23.8 ft	22.8 ft
9.0ft	13.2 fc	28.6 ft	27.3 ft

■ Vert. Spread: 115.6°  
■ Horiz. Spread: 113.2°

## FIXTURE PERFORMANCE:

MODEL	MAX WATTAGE	LUMEN (FL)
MHTi-MAGNT8-SC-2-28E (Pair)	28W	3,200
MHTi-MAGNT8-SC-4-28E (Pair)	28W	3,200

## SPECIFICATIONS

**Housing:** Extruded Aluminum Construction. Flat Back with Magnets for Easy Install. Screw Mounting Available at the Ends.

**Lens:** Clear or White Polycarbonate.

**Electrical:** Non-Integrated PoE Low Voltage Driver Node, Sensor and Emergency Battery Backup.

**Mounting:** Surface Mount, Retrofit into Existing Troffers.

**Warranty:** 10-Year Warranty

**Initial Delivered Lumens:** 3,200 Lumens

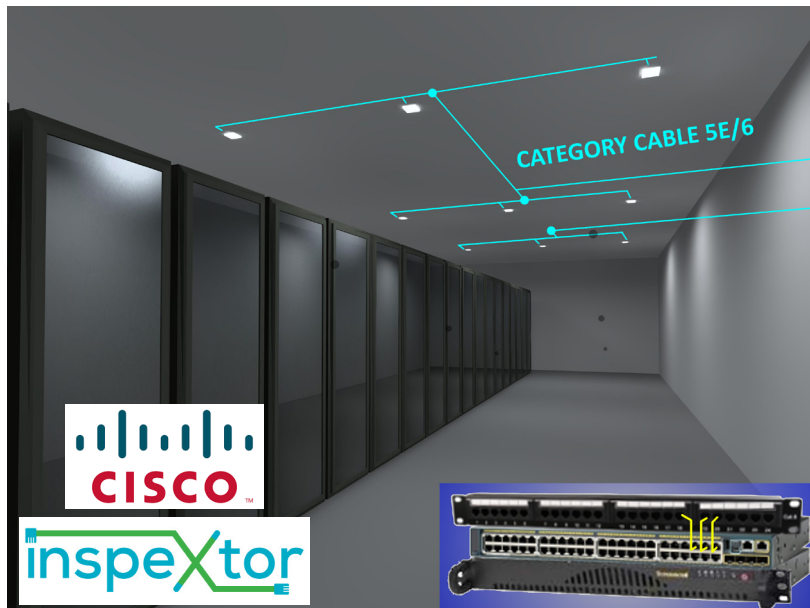
**Input Power:** 28W (Pair)

**CCT:** 3000K/3500K/4000K/5000K

**L70 Lifetime:** >100,000 Hours

### Dimensions:

MAGNT8-SC-2: 18.9" x 1.4" x 1.4"  
 MAGNT8-SC-4: 42.5" x 1.4" x 1.4"



- All Products are ETL Listed and Assembled in ISO9000/1 Certified US Facility
- Fixtures carry a limited 10-year Warranty (See Warranty Terms and Conditions)
- Every Product is Quality Tested and Inspected Prior to Shipment
- Proudly Manufactured in the USA

### inspeXtor Plant Operations

1961 Richmond Terrace  
 Staten Island, New York 10302  
 Tel: (718) 524-4370  
 Fax: (718) 524-4390

### West Coast Operations

2285 Michael Faraday Drive  
 Suite 10  
 San Diego, California 92154  
 Tel: (619) 661-0600

[www.inspeXtor.com](http://www.inspeXtor.com)

**888-511-7780**

Rev Date: June 2019