



FEATURES

- An inspeXtor Platform Compatible Fixture Powered by Cisco using PoE (Power over Ethernet) Cabling
- The inspeXtor Platform is a PoE Lighting Management System providing Building Automation and Data Collection
- PoE Systems are Safe and Efficient Low Voltage Platforms

SPECIFICATIONS

Housing: Flexible Rubber - Wet Rated Tape Light - Field Trimmable - Mechanical or Tape Install

Electrical: Non-Integrated PoE Low Voltage Driver Node, Sensor and Emergency Battery Backup

Warranty: 5-Year Warranty

Initial Delivered Lumens: 180 Lumens per foot

Max Input Power: 2W per foot

CCT: 2700K/3000K/3500K/4000K/5000K

CRI: 85

L70 Lifetime: >50,000 Hours

Rated Lifespan: >50,000 Hours

Dimensions:

12" x 0.6" x 0.2"



PROJECT:

TYPE:

NOTES:

ORDERING CODE

MHTi-FLEX-SC	—		—		—		—	
Model		Size		CCT		Mounting		Options

EXAMPLE

MHTi-FLEX-SC	—	72	—	35K	—	TA	—	EM
--------------	---	----	---	-----	---	----	---	----

Series:

MHTi-FLEX-SC

Size:

- 12 - 12-inch Max 2W (Minimum)
- 18 - 18-inch Max 3W
- 24 - 24-inch Max 4W
- 30 - 30-inch Max 5W
- 36 - 36-inch Max 6W
- 42 - 42-inch Max 7W
- 48 - 48-inch Max 8W
- Custom _____

Color Temperatures:

- 27K - 2700K
- 3K - 3000K
- 35K - 3500K
- 4K - 4000K
- 5K - 5000K

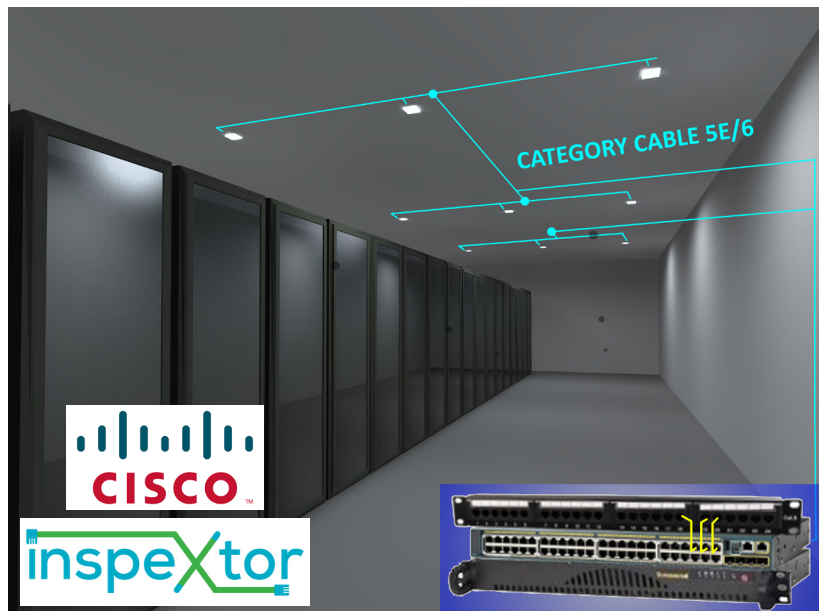
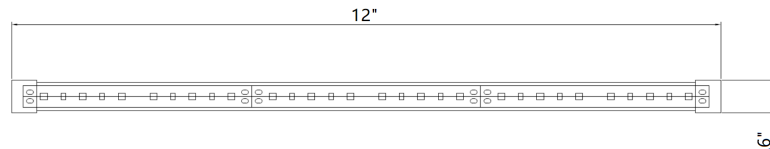
Mountings:

- TA - Tape Mount
- ME - Mechanical Mount

Options:

- EM - Emergency Battery Backup

DIMENSIONS:



- All Products are ETL Listed and Assembled in ISO9000/1 Certified US Facility
- Fixtures carry a limited 5-year Warranty (See Warranty Terms and Conditions)
- Every Product is Quality Tested and Inspected Prior to Shipment
- Proudly Manufactured in the USA

inspeXtor Plant Operations

1961 Richmond Terrace
Staten Island, New York 10302
Tel: (718) 524-4370
Fax: (718) 524-4390

West Coast Operations

2285 Michael Faraday Drive
Suite 10
San Diego, California 92154
Tel: (619) 661-0600



Manufactured in the USA

www.inspeXtor.com

888-511-7780

Rev Date: June 2019