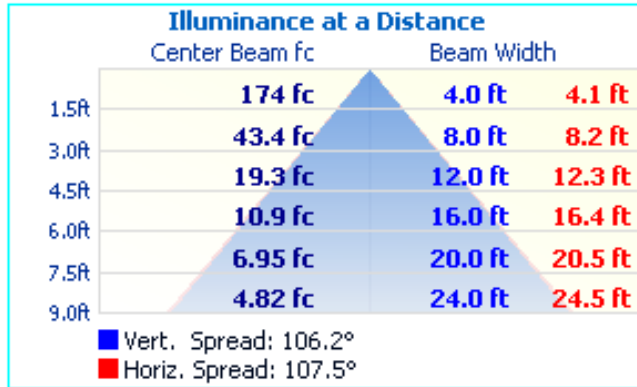
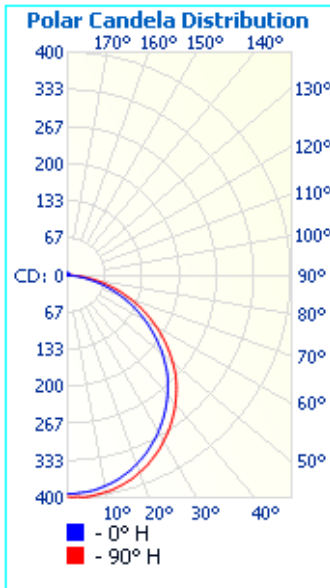




## PHOTOMETRICS:

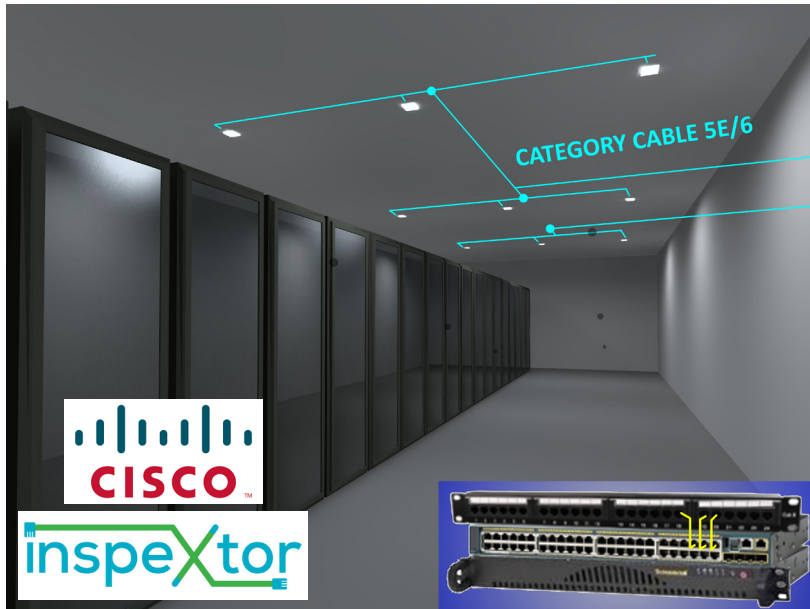
### MHTi-DL-BARILE-SC-4-9E

Luminaire Output: 1,000 lumens, 9 Watts



## FIXTURE PERFORMANCE:

MODEL	MAX WATTAGE	LUMEN
MHTi-DL-BARILE-SC-4-9E	9W	1,000
MHTi-DL-BARILE-SC-4-11E	11W	1,250
MHTi-DL-BARILE-SC-6-14E	14W	1,550
MHTi-DL-BARILE-SC-6-17E	17W	1,900



- All Products are ETL Listed and Assembled in ISO9000/1 Certified US Facility
- Fixtures carry a limited 5-year Warranty (See Warranty Terms and Conditions)
- Every Product is Quality Tested and Inspected Prior to Shipment
- Proudly Manufactured in the USA

## SPECIFICATIONS

**Housing:** Die-cast Aluminum Housing with Spring Clips

**Lens:** Frosted Polycarbonate

**Beam Angle:** 110°

**Electrical:** Non-Integrated PoE Low Voltage Driver Node, Sensor and Emergency Battery Backup.

**Warranty:** 5-Year Warranty

**Initial Delivered Lumens:**  
1,000 - 1,900 Lumens

**Max Input Power:**  
9/11/14/17W

**CCT:** 3000/3500K/  
4000K/5000K/  
Tunable (2700K to 5700K)

**CRI:** 80

**L70 Lifetime:** >50,000 Hours

**Rated Lifespan:** >60,000 Hours

### Dimensions:

4-inch Model: 4.7" x 4.7" x 1.1"  
6-inch Model: 6.7" x 6.7" x 1.1"

### inspextor Plant Operations

1961 Richmond Terrace  
Staten Island, New York 10302  
Tel: (718) 524-4370  
Fax: (718) 524-4390

### West Coast Operations

2285 Michael Faraday Drive  
Suite 10  
San Diego, California 92154  
Tel: (619) 661-0600

[www.inspextor.com](http://www.inspextor.com)

**888-511-7780**

Rev Date: June 2019