

PROJECT:

TYPE:

NOTES:

FEATURES

- An inspeXtor Platform Compatible Peripheral Powered by Cisco using PoE (Power over Ethernet) Cabling
- The inspeXtor Platform is a PoE Lighting Management System providing Building Automation and Data Collection
- PoE Systems are Safe and Efficient Low Voltage Platforms

SPECIFICATIONS

Allows Manual Control of Fixtures on a MHTi Based Communication Network

Ability to Control Thousands of Fixtures Throughout the Network via Tagging System (Patent Pending)

Designed for Installation Via Cat5 Cable to the Closet Fixture

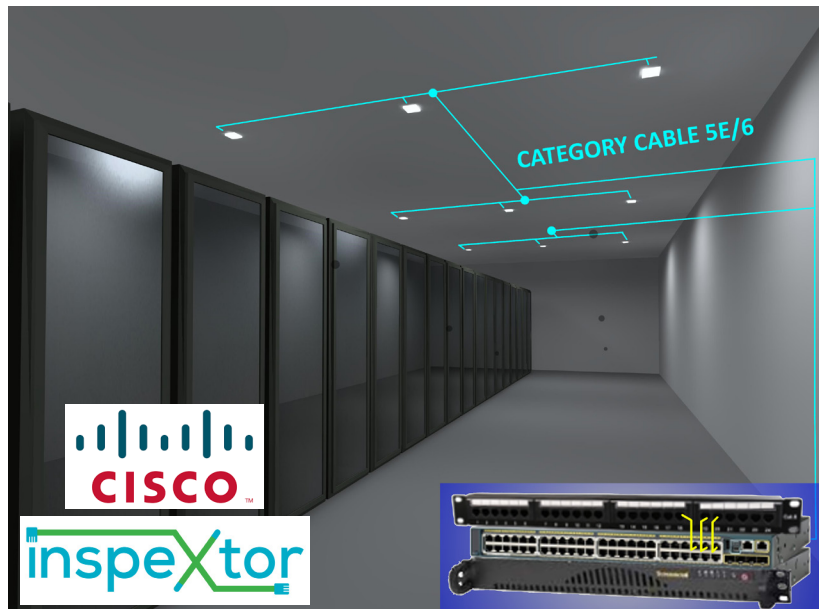
Controllable Functions Include: On, Cancel, Up, Down, and Three Scene Buttons (Seven Button Version Only)

Designed for Easy Installation into Standard Gang Boxes

Power Consumption - 0.1W

RoHS Compliance

Operating Temperature: 32°F to 100°F



- All Products are ETL Listed and Assembled in ISO9000/1 Certified US Facility
- Fixtures carry a limited 5-year Warranty (See Warranty Terms and Conditions)
- Every Product is Quality Tested and Inspected Prior to Shipment
- Proudly Manufactured in the USA



inspeXtor Plant Operations

1961 Richmond Terrace
Staten Island, New York 10302
Tel: (718) 524-4370
Fax: (718) 524-4390

West Coast Operations

2285 Michael Faraday Drive
Suite 10
San Diego, California 92154
Tel: (619) 661-0600



Manufactured in the USA

www.inspeXtor.com

888-511-7780

Rev Date: June 2019