

PROJECT:

TYPE:

NOTES:

FEATURES

- An inspeXtor Platform Compatible Peripheral Powered by Cisco using PoE (Power over Ethernet) Cabling
- The inspeXtor Platform is a PoE Lighting Management System providing Building Automation and Data Collection
- PoE Systems are Safe and Efficient Low Voltage Platforms

SPECIFICATIONS

Stamped Steel Housing

One RJ45 Input to Four RJ45 Output Splitter

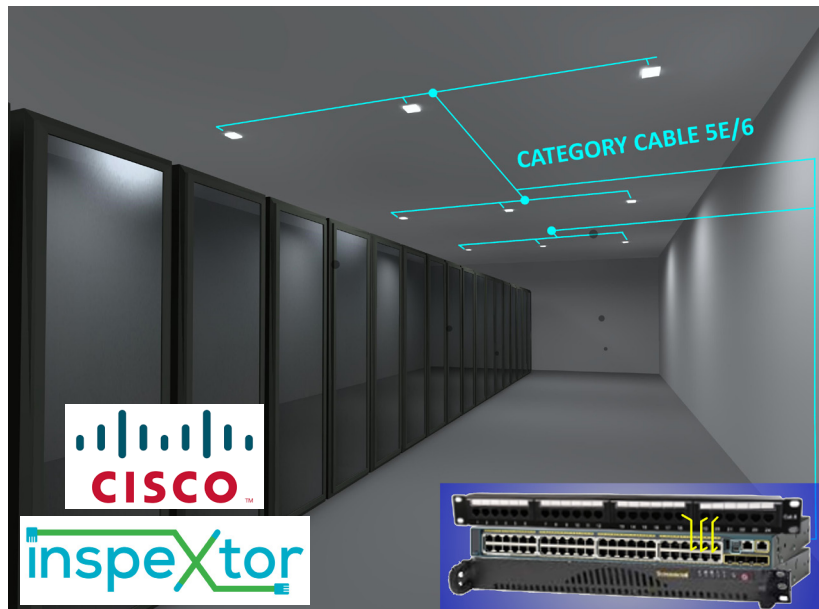
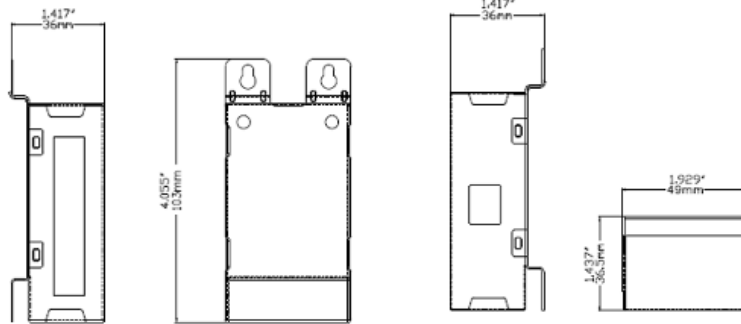
No External Power Source Required

Two Mounting Tabs for Surface Mounting

Designed for MHTi's inspeXtor System

Overall Dimensions: 4.05" (L) X 1.93" (W) X 1.43" (H)

Operating Temperature: 32°F to 100°F



- All Products are ETL Listed and Assembled in ISO9000/1 Certified US Facility
- Fixtures carry a limited 5-year Warranty (See Warranty Terms and Conditions)
- Every Product is Quality Tested and Inspected Prior to Shipment
- Proudly Manufactured in the USA



inspeXtor Plant Operations

1961 Richmond Terrace
Staten Island, New York 10302
Tel: (718) 524-4370
Fax: (718) 524-4390

West Coast Operations

2285 Michael Faraday Drive
Suite 10
San Diego, California 92154
Tel: (619) 661-0600



Manufactured in the USA

www.inspeXtor.com

888-511-7780

Rev Date: June 2019