

PROJECT:

TYPE:

NOTES:

FEATURES

- An inspeXtor Platform Compatible Peripheral Powered by Cisco using PoE (Power over Ethernet) Cabling
- The inspeXtor Platform is a PoE Lighting Management System providing Building Automation and Data Collection
- PoE Systems are Safe and Efficient Low Voltage Platforms

SPECIFICATIONS

\Designed for Installation Inside the Bottom of a Light Fixture Body or the Ceiling

Suitable Mounting Height of 8-10FT With a 10FT Diameter Coverage Area

Daylight Harvesting, Motion, and Occupancy

Sensor Adjustments via MHTi inspeXtor

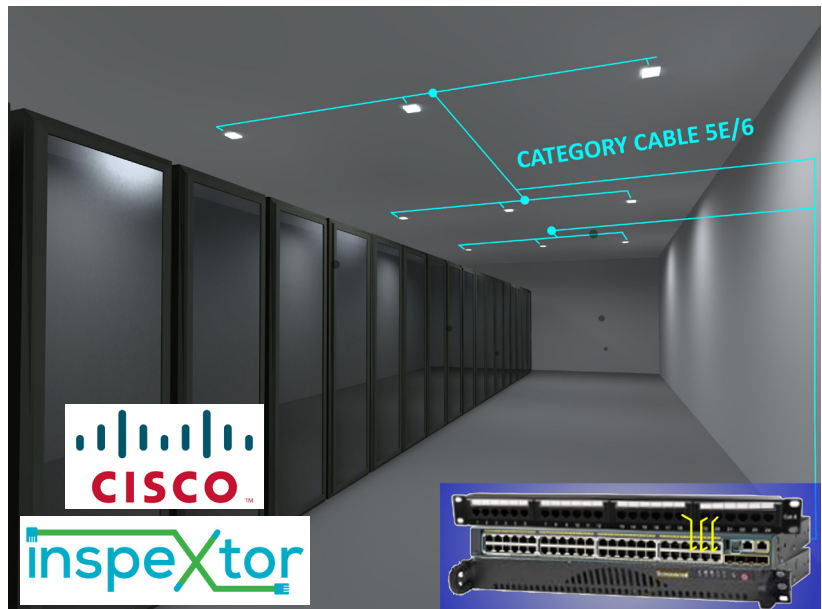
Time Delay Adjustment - 5 Seconds to 15 Minutes

Power Consumption - < 0.5W

Dimensions - 1.8" Dimeter Trim, 1" Diameter Housing, 1.1" Overall Height

RoHS Compliance

Operating Temperature: 32°F to 100°F



- All Products are ETL Listed and Assembled in ISO9000/1 Certified US Facility
- Fixtures carry a limited 5-year Warranty (See Warranty Terms and Conditions)
- Every Product is Quality Tested and Inspected Prior to Shipment
- Proudly Manufactured in the USA



inspeXtor Plant Operations

1961 Richmond Terrace
Staten Island, New York 10302
Tel: (718) 524-4370
Fax: (718) 524-4390

West Coast Operations

2285 Michael Faraday Drive
Suite 10
San Diego, California 92154
Tel: (619) 661-0600



Manufactured in the USA

www.inspeXtor.com

888-511-7780

Rev Date: June 2019