

## FEATURES

- An inspeXtor Platform Compatible Peripheral Powered by Cisco using PoE (Power over Ethernet) Cabling
- The inspeXtor Platform is a PoE Lighting Management System providing Building Automation and Data Collection
- PoE Systems are Safe and Efficient Low Voltage Platforms

## SPECIFICATIONS

Fixture Agnostic up to 48 Watts

RJ45 Connection Type

Internal or Optional Remote Mount

Engineered to Respond to the MHTi Peripheral Communication Network

Automatic Network Discovery

Ultra High Electrical Conversion Efficiency of 98%

Supports Optional MHTi Battery Backup

Features a Dimming Range of 1% to 100%

Dimensions: 7" x 2.75" x 1.5"

Operating Temperature 32°F to 104°

PROJECT:

TYPE:

NOTES:

Supply Voltage - 24-56 Vdc

Max Output Current - 1.3 Amps

Response Time - 0.1 Sec

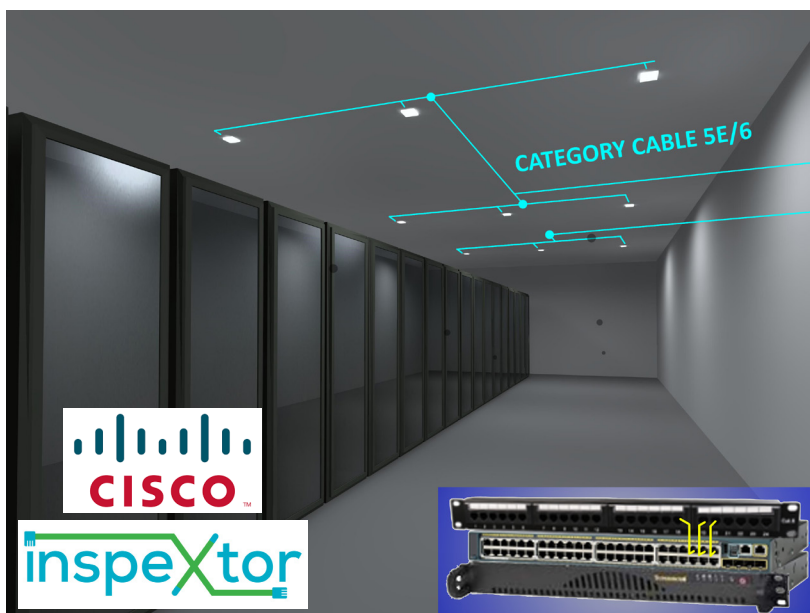
Data Rate - 4 Kbit/Sec

Off-Mode Power Consumption - 0.5 Watts

Dimming Transition Time - 0.1 to 25 Seconds

Maximum Wire Length to Node - 20 Feet

60 Vdc Surge Protection & Short Circuit Protection



- All Products are ETL Listed and Assembled in ISO9000/1 Certified US Facility
- Fixtures carry a limited 5-year Warranty (See Warranty Terms and Conditions)
- Every Product is Quality Tested and Inspected Prior to Shipment
- Proudly Manufactured in the USA



### inspeXtor Plant Operations

1961 Richmond Terrace  
Staten Island, New York 10302  
Tel: (718) 524-4370  
Fax: (718) 524-4390

### West Coast Operations

2285 Michael Faraday Drive  
Suite 10  
San Diego, California 92154  
Tel: (619) 661-0600



Manufactured in the USA

[www.inspeXtor.com](http://www.inspeXtor.com)

888-511-7780

Rev Date: June 2019