

PROJECT:

TYPE:

NOTES:

## FEATURES

- An inspeXtor Platform Compatible Peripheral Powered by Cisco using PoE (Power over Ethernet) Cabling
- The inspeXtor Platform is a PoE Lighting Management System providing Building Automation and Data Collection
- PoE Systems are Safe and Efficient Low Voltage Platforms

## SPECIFICATIONS

Stand Alone or Integrated

Emergency Battery Backup System Compatible with the inspeXtor PoE LED System

25% of the Fixture Wattage Will Be Available for 90 Minutes

8 Watt Output Suitable For Any Fixture Up To 32W

Battery Will Trickle Charge While the Fixture is On or Off

24 Charge Time

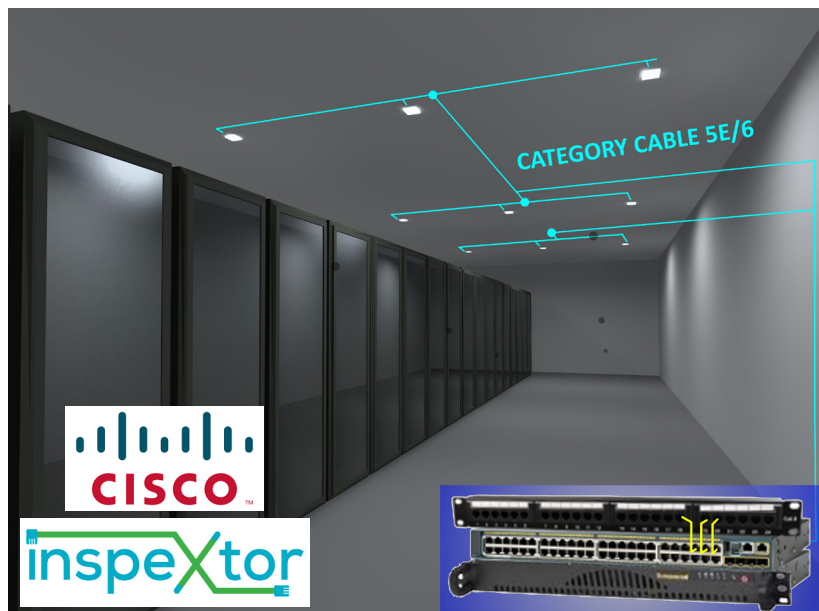
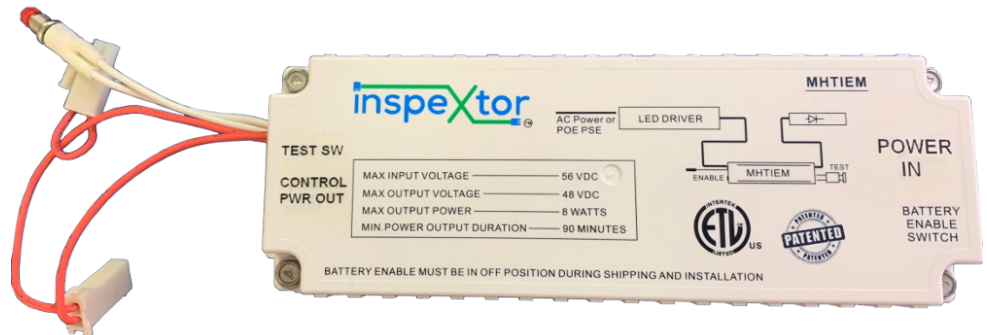
Line Voltage Not Needed

Charge Time and Drive Current Can Be Changed Dynamically

Dimensions: 7.25" x 2.375" x 1.5"

Operating Temperature 65°F to 90°

INPUT	OUTPUT POWER
PoE+/UPoE 48-56 VDC	40 VDC / 200mA
DELIVERED WATTAGE	SUITABLE MHTi FIXTURE WATTAGE
8 WATTAGE	< 32W



- All Products are ETL Listed and Assembled in ISO9000/1 Certified US Facility
- Fixtures carry a limited 5-year Warranty (See Warranty Terms and Conditions)
- Every Product is Quality Tested and Inspected Prior to Shipment
- Proudly Manufactured in the USA



### inspeXtor Plant Operations

1961 Richmond Terrace  
Staten Island, New York 10302  
Tel: (718) 524-4370  
Fax: (718) 524-4390

### West Coast Operations

2285 Michael Faraday Drive  
Suite 10  
San Diego, California 92154  
Tel: (619) 661-0600



Manufactured in the USA

[www.inspeXtor.com](http://www.inspeXtor.com)

888-511-7780

Rev Date: June 2019