

# LED HIGH OUTPUT FLOOD

## MHTL-FLD-HO SERIES

Project \_\_\_\_\_

Part Number \_\_\_\_\_

Quantity \_\_\_\_\_

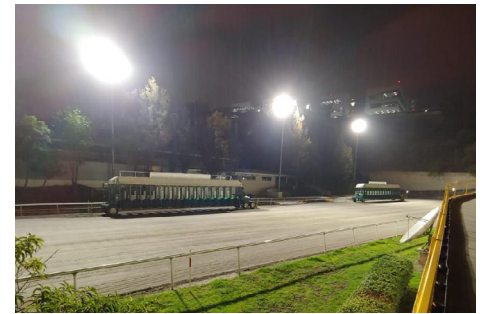


### APPLICATIONS

- Aprons
- Hangar
- High Mast
- Racecourse
- Outdoor Stadiums

### FEATURES

- >100,000 Hours Rated Lifespan
- 10-year Warranty; L70 > 100,000 Hours
- Die Cast Aluminum Housing and Steel Construction
- Clear Tempered Glass Lens and PC Optical Lens
- Adjustable Yoke Mount for Flood Applications
- Available in Multiple Light Distributions
- Fixture Protection Class IP66 and IK08
- 0-10V, DALI and DMX Control Options
- TAA/BAA Compliant



### LED/DRIVER

- Universal Input Voltage 120 - 277V
- Power Factor > 0.95 @277V
- THD < 15% @277V
- Color Temperature 3000K to 5000K
- CRI > 75
- 6kV Surge Protection

Model	Input Power	Lm/W	Lumen	Dimensions (with Yoke Mount)
MHTL-FLD-HO-200E-5K	200 W	140	28,000	12.4" x 12.6" x 4.6"
MHTL-FLD-HO-400E-5K	400 W	140	56,000	16.5" x 13.4" x 8.7"
MHTL-FLD-HO-600E-5K	600 W	140	84,000	20.8" x 13.4" x 8.9"



Manufactured in the USA

Toll Free **888-511-7780** • [www.mhtlighting.com](http://www.mhtlighting.com)



# LED HIGH OUTPUT FLOOD

## MHTL-FLD-HO SERIES

Project \_\_\_\_\_

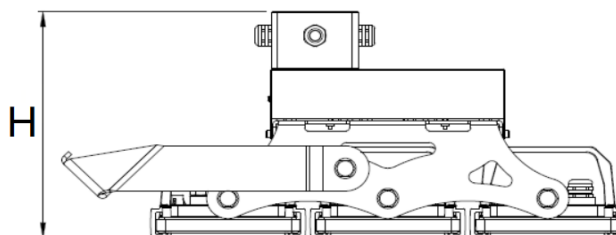
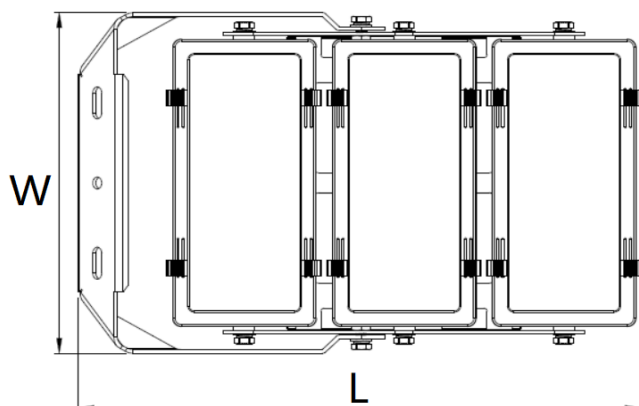
Part Number \_\_\_\_\_

Quantity \_\_\_\_\_

### ORDERING CODES

MHTL-FLD-HO	<u>    </u> E	<u>    </u>	<u>    </u>	<u>    </u>	<u>    </u>
	<u>Wattage:</u>	<u>Color Temp:</u>	<u>Input Voltage:</u>	<u>Distribution:</u>	<u>Option:</u>
	200,	3K=3000K	U=120-277V	10=10°	(Standard in White)
	400,	4K=4000K	347=347V	15=15°	CP=Cord & Plug (Specify Cord & Plug)
	600	5K=5000K	480=480V	30=30°	SPD=20kV Surge Protective Device
				45=45°	DALI=DALI Control
				60=60°	DMX=DMX Control
				15X40=15°X40°	VISOR=Visor (Blocks Uplight)

### DIMENSIONS



Model	L (Length)	W (Width)	H (Height)	# of LED Modules	Weight (with Bracket)
200 W	12.4"	12.6"	4.6"	1	10 lbs
400 W	16.5"	13.4"	8.7"	2	21 lbs
600 W	20.8"	13.4"	8.9"	3	35 lbs

- MHT Products are ETL Listed and Assembled in ISO9000/1 Certified US Facility
- MHT Lighting Offers a 10-year Warranty (See Warranty Terms and Conditions)
- Every Product is Quality Tested and Inspected Prior to Shipment
- Proudly Manufactured in the USA
- For Product IES Files Please Contact Your Local Reps

#### MHT Plant Operations

1961 Richmond Terrace  
Staten Island, New York 10302  
Tel: (718) 524-4370  
Fax: (718) 524-4390

#### West Coast Operations

2285 Michael Faraday Dr. Suite 10  
San Diego, California 92154  
Tel: (619) 661-0600

[www.mhtlighting.com](http://www.mhtlighting.com)

**888-511-7780**

MHT Confidential  
Rev Date: July 2019