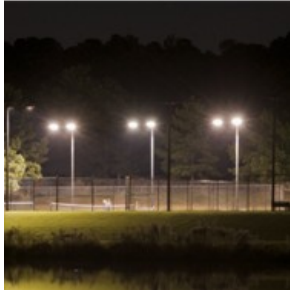




Lamp/Ballast Retrofit Kits Spherical VL SERIES

Project: _____
 Part Number: _____
 Quantity: _____



APPLICATIONS

- RETROFITS
 - Acorns
 - Decorative Fixtures
 - Bollards
 - Poletop Fixtures

FEATURES

- 60,000 Hour Lifespan (IESNA)
- 3 Year or 15,000 Hour Warranty
- Square Profiled Aluminum Ballast Housing
- Includes Heat Sink and Basic Mounting Hardware
- Available “Screw-In” E39/E26 Mogul Base Adapter (35/55W)
- **Easy Retrofits of Pole Top and Decorative Fixtures**
- Ambient Temp Range: -30 to 120 deg F



“Base Down”
Installation

LAMP/GENERATOR

- 120-277V Universal Electronic Ballast
- Available 0-10V Dimmability, 2-way Communication
- Power Factor > 0.95, Operation Frequency 50-60Hz
- Instant-On, Flicker Free, Minimum Light Loss
- 35W—200W Spherical Internal Induction Lamp Design
- Color Temps Available: 3000K—5000K
- CRI > 85—Excellent Color Rendition



Product #	Wattage	Replaces	Lm/W	Lumens	Voltage	Current (A)	Input Power
MHT-VL-35E	35	MH - 70W HPS - 100W	72.5	2,538	120/277	0.16 - 0.35	37
MHT-VL-40E	40	MH - 100W HPS - 100W	72.5	2,900	120/277	0.18 - 0.40	42
MHT-VL-55E	55	MH-100W HPS-100W	72.5	3,988	120/277	0.21 - 0.49	58
MHT-VL-85E	85	MH - 120W HPS - 150W	72.5	6,163	120/277	0.27 - 0.62	74
MHT-VL-100E	100	MH - 150W HPS - 150W	77.5	7,750	120/277	0.32 - 0.70	84
MHT-VL-120E	120	MH - 200W HPS - 200W	77.5	9,300	120/277	0.40 - 0.93	105
MHT-VL-165E	165	MH - 200W HPS - 200W	77.5	12,788	120/277	0.45 - 1.05	126
MHT-VL-200E	200	MH - 250W HPS - 300W	82.5	16,500	120/277	0.59 - 1.36	158

Available Options:

- Dimmable Ballast, E26/E39 Mogul Adapter (35/55W)



Lamp/Ballast Retrofit Kits Spherical VL SERIES

Project: _____
 Part Number: _____
 Quantity: _____

ORDERING CODES

MHT-VL - W - - - -

Wattage:

35, 55, 85, 100
120, 165, 200

Color Temp:

3K = 3000K
4K = 4000K
5K = 5000K

Voltage:

U = Universal
3 = 347V

Dimmable

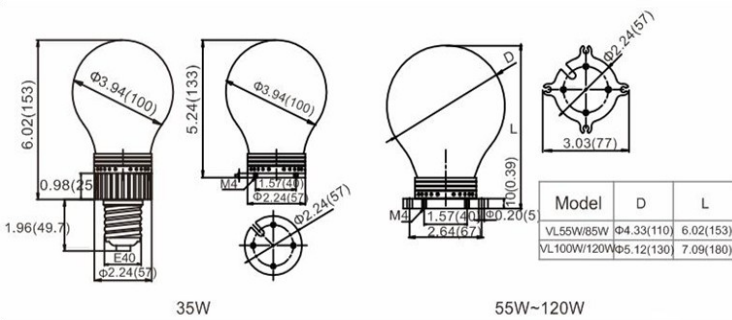
Ballast:
DB

Options:

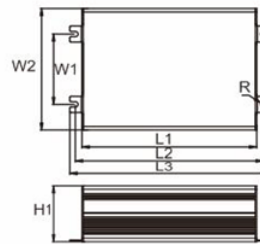
E39 = E39 Mogul Adapter w/ Heat Sink
E26 = E26 Base Adapter w/ Heat Sink

DIMENSIONS

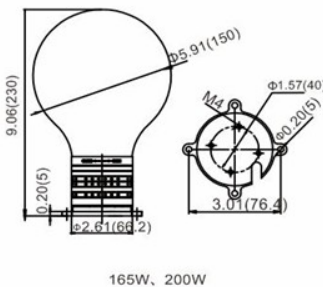
LAMP DIMENSIONS



BALLAST DIMENSIONS



Electronic Ballast (Profile aluminum)



	L3	W2	H
MHT-VL-35E	6.0 (152)	3.7 (94)	1.6 (40)
MHT-VL-40E	6.0 (152)	3.7 (94)	1.6 (40)
MHT-VL-55E	6.0 (152)	3.7 (94)	1.6 (40)
MHT-VL-85E	7.0 (178)	4.1 (105)	1.9 (48)
MHT-VL-100E	7.0 (178)	4.1 (105)	1.9 (48)
MHT-VL-120E	8.4 (213)	4.8 (120)	2.1 (53)
MHT-VL-165E	8.4 (213)	4.8 (120)	2.1 (53)
MHT-VL-200E	8.4 (213)	4.8 (120)	2.1 (53)

- MHT Products are UL Listed/Labeled and Assembled in ISO9000/1 Certified US Facility
- Every product is quality tested and inspected prior to shipment
- MHT Lighting offers a 3-year, 15,000 hour Warranty (please see Warranty Terms and Conditions)

MHT Plant Operations
 1961 Richmond Terrace
 Staten Island, NY 10302
 Ph: (718) 524-4370, Fx: (718) 524-4390

West Coast Operations
 2285 Michael Faraday Dr, Ste 15
 San Diego, CA 92154
 Ph: (619) 661-0600, Fx: (619) 661-0607